

Belle Fourche River Watershed Partnership Segment IV

Nonpoint Source Task Force Meeting

Pierre, South Dakota

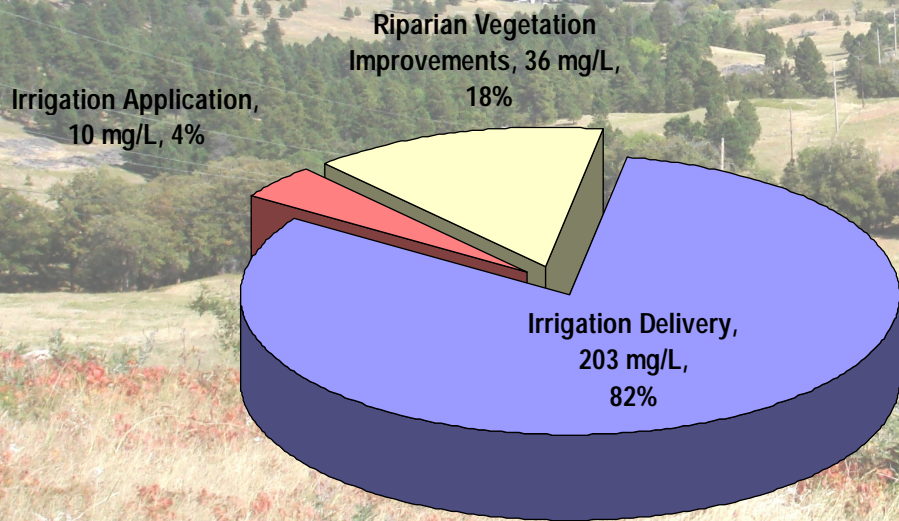
December 9, 2008



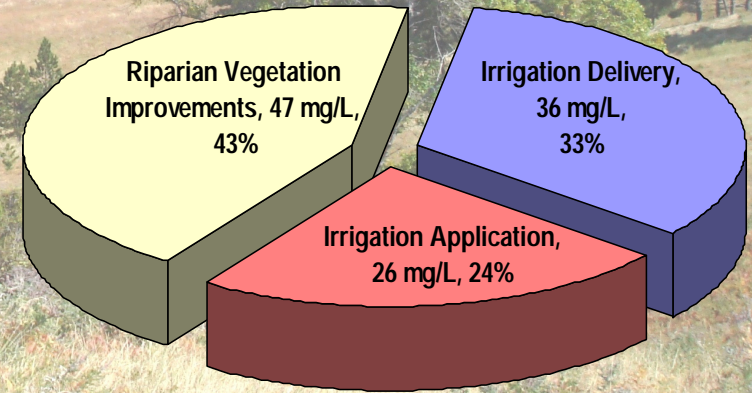
**Belle Fourche River
Watershed Partnership**

Belle Fourche River Watershed Partnership Ten-Year Plan

- Belle Fourche River and Horse Creek Impaired by Total Suspended Solids (TSS)



Above Orman Dam



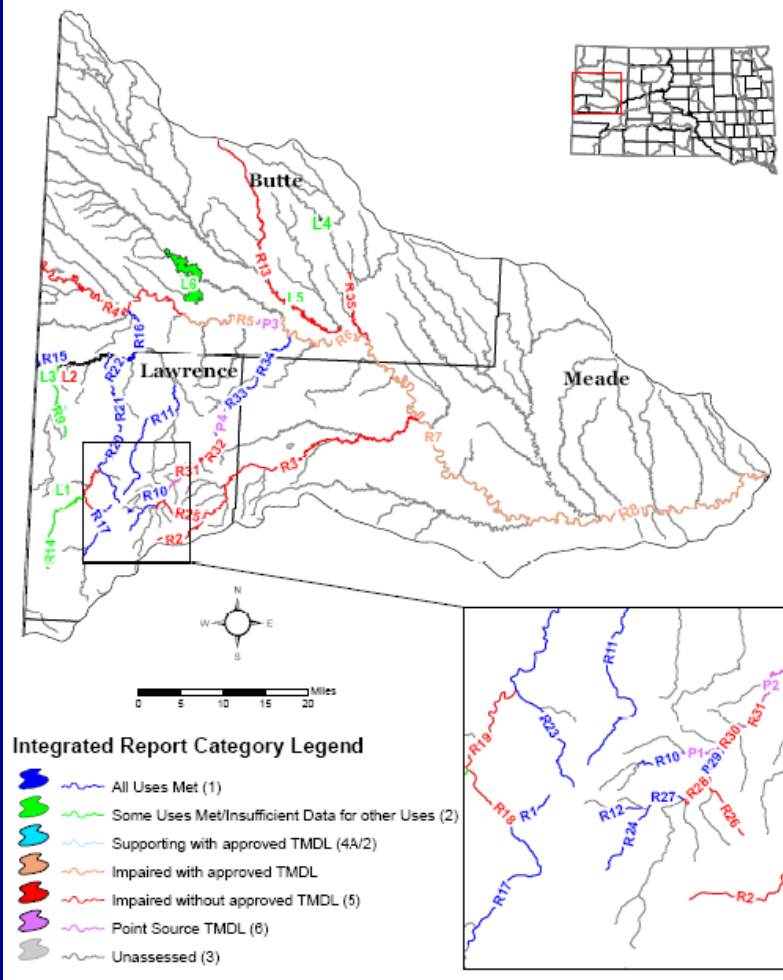
Below Orman Dam



South Dakota Integrated Report

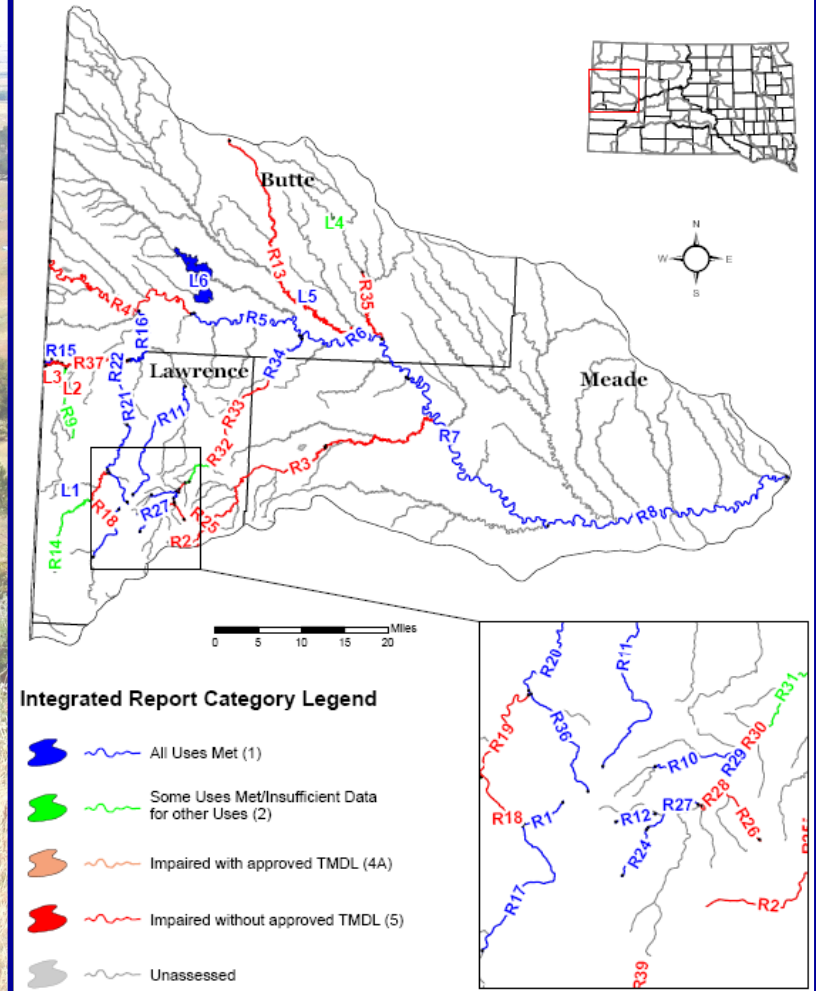
Belle Fourche River Basin

2006



Belle Fourche River Basin

2008

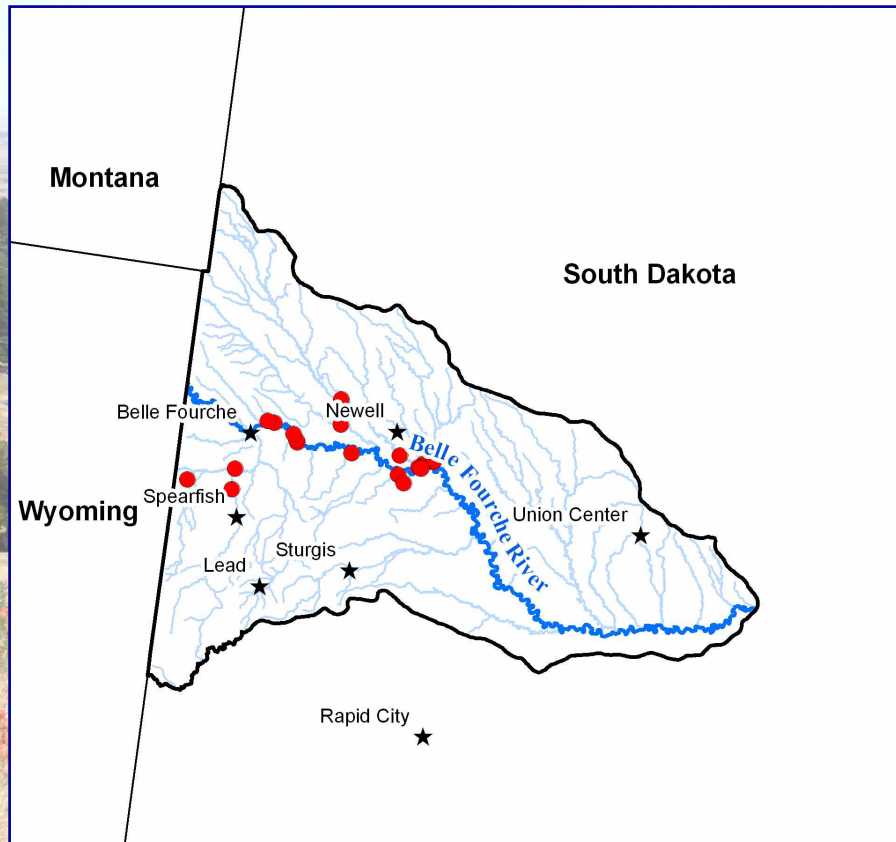


Belle Fourche Irrigation District Projects

- 28 Automated gates (319)
- 25 Real-time sites (319)
- 13,000 Feet of lining (BOR)
- 16,144 Feet of pipeline (BOR/BFID)
- Upgraded water card order system (319)
- Operational model (319)



Producer Irrigation Projects



- 34,470 feet of pipeline (319)
- 17 sprinkler systems (319)



Belle Fourche River
Watershed Partnership

Range Acres Impacted

- Total range acres impacted by BFRWP 271,320
 - CCPI planning 102,591 acres (overlap with implementation projects)
 - 319 planning projects 17,973 acres
 - 319 Implementation projects 200,680 acres



Belle Fourche River
Watershed Partnership

Riparian Acres Impacted

- Total riparian acres impacted by BFRWP
27,978
 - CCPI planning 12,439 acres (overlap with implementation projects)
 - 319 planning 1,956 acres
 - 319 Implementation projects 18,376 acres



Demand for Implementation Dollars

- \$809,000 requested in range improvements in 2007/2008 with \$473,200 available

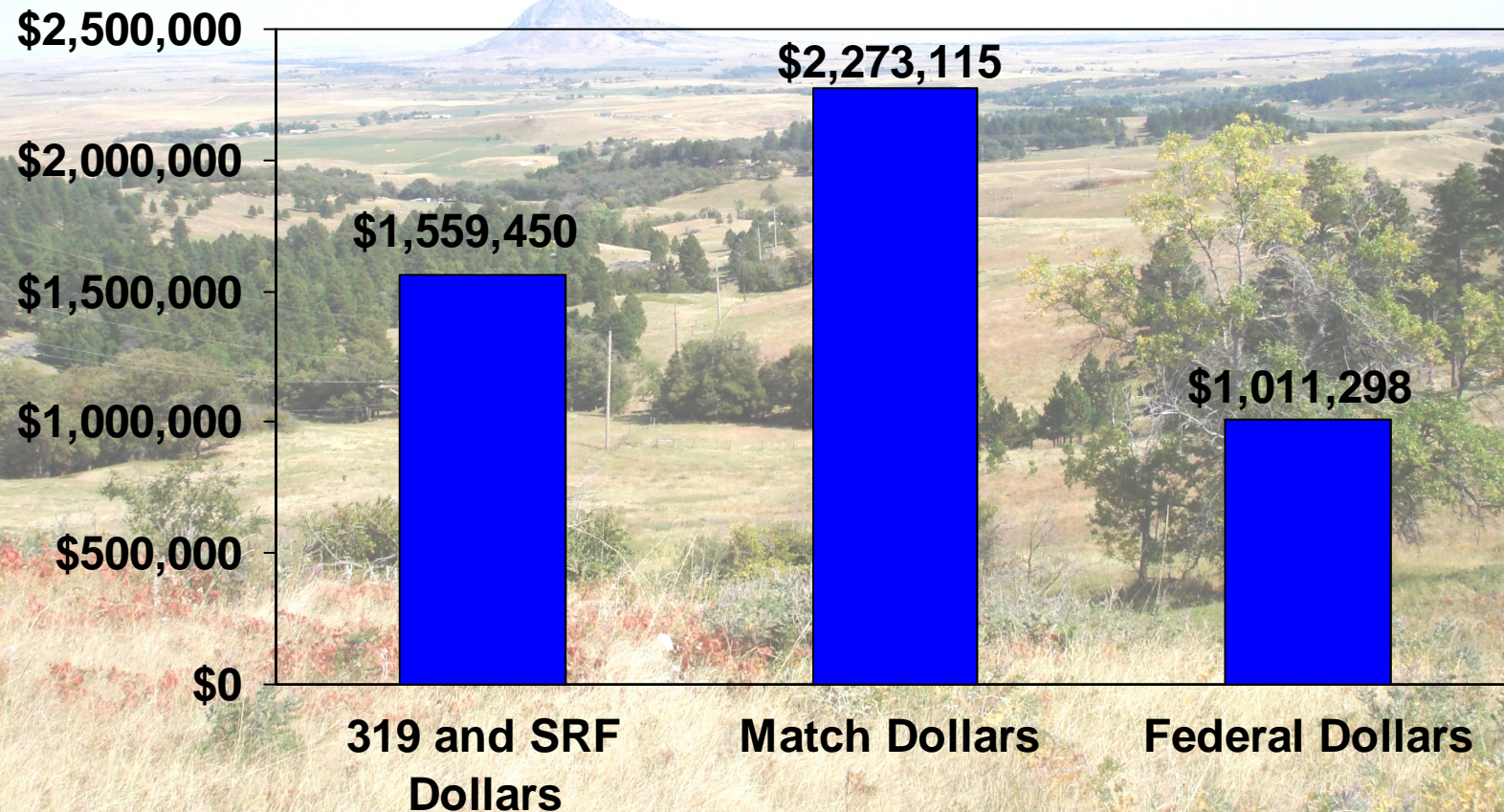


Other Partnership Grants

- Rapid Watershed Assessment - NRCS funded (\$150,000)
- Cooperative Conservation Partnership Initiative Grant - NRCS funded (\$200,000)
- Conservation Innovation Grant - NRCS funded (\$500,000)



Segment III Projects Dollars Invested to Date



Belle Fourche River
Watershed Partnership

Proposed Segment IV (2009-2011)

- \$400,000 Grazing Implementation Projects
- \$180,000 Riparian Grazing Management Planning
- \$305,000 Irrigation Implementation Projects
- \$25,615 Redwater Irrigation Association Study
- \$304,125 Public Outreach, Project Management
- \$42,625 Water-Quality Monitoring
- \$75,000 Improved Implementation Assessment Model

